



- Compact, impact-resistant enclosures, also in versions with integrated metal bracket for the optimised assembly of cable glands
- Customer-specific equipping with terminals, cable glands and miniature fuses
- Degree of protection IP66

E3

WebCode 8118B

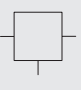
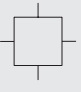
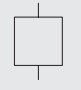
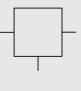
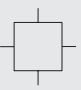
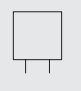
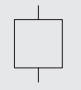


R. STAHL Series 8118 terminal boxes are equipped, in accordance with customer specifications, with various series terminals and cable glands made from plastic or metal, if required also with miniature fuses. They are available in 3 design sizes and are made from glass fibre reinforced polyester resin.

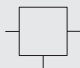
		IECEX / ATEX					
Zone		0	1	2	20	21	22
Installation in			•	•		•	•

Selection Table							
Product Description		Ex e terminal box					
Gas temperature class		T5					
Ambient temperature °C		-50 ... +55 °C					
Figure	Product Type	Cable glands	Terminal	Terminal rail	Rated operational voltage AC	Art. No.	Weight kg
	8118/122-331-GB	2 x Polyamide stopping plug M20 x 1,5	6 x Weidmüller WDU 2-conductor, 2.5 mm², beige 2 x Weidmüller WPE 2-conductor, 4 mm², green-yellow	–	690 V	133117 ▲	0.720
	8118/122-305-GB	2 x Polyamide stopping plug M25 x 1,5	6 x Weidmüller WDU 2-conductor, 2.5 mm², beige 2 x Weidmüller WPE 2-conductor, 4 mm², green-yellow	–	690 V	133123	0.720
Product Description		Ex e terminal box					
Gas temperature class		T6					
Ambient temperature °C		-55 ... +40 °C					
Figure	Product Type	Cable glands	Terminal	Terminal rail	Rated operational voltage AC	Art. No.	Weight kg
	8118/132-149-0	6 x Polyamide cable gland M25 x 1,5 7 – 17 mm	1 x WAGO 221 2-conductor 4 mm² light grey	35 x 100 mm (1x)	440 V	277900 ▲	–

**Selection Table**

Product Description		Ex e terminal box					
Gas temperature class		T6					
Ambient temperature °C		-50 ... +40 °C					
Figure	Product Type	Cable glands	Terminal	Terminal rail	Rated operational voltage AC	Art. No.	Weight kg
	8118/122-504-2	1 x Polyamide stopping plug M25 x 1,5	5 x WAGO 2002 3-conductor, 2,5 mm <sup>2</sup> , grey 1 x WAGO 2002 3-conductor, 2,5 mm <sup>2</sup> , green-yellow	–	550 V	202995	0.680
	8118/132-542-2	2 x Polyamide stopping plug M25 x 1,5	7 x WAGO 2002 4-conductor, 2,5 mm <sup>2</sup> , grey 1 x WAGO 2002 4-conductor, 2,5 mm <sup>2</sup> , green-yellow	–	550 V	202996	0.890
Product Description		Ex e terminal box					
Gas temperature class		T6					
Ambient temperature °C		-40 ... +40 °C					
Figure	Product Type	Cable glands	Terminal	Terminal rail	Rated operational voltage AC	Art. No.	Weight kg
	8118/112-047-0	2 x Polyamide cable gland M20 x 1,5 4 – 13 mm 1 x Polyamide stopping plug (Provided separately) M20 x 1,5	3 x WAGO 264 2-conductor, 2,5 mm <sup>2</sup> , grey 1 x WAGO 264 4-conductor, 2,5 mm <sup>2</sup> , green-yellow	15 x 70 mm (1x)	690 V	224642 ▲	0.360
	8118/122-504-0	3 x Polyamide cable gland M25 x 1,5 7 – 17 mm 2 x Polyamide stopping plug M25 x 1,5	11 x Phoenix UT 2-conductor, 4 mm <sup>2</sup> , grey 2 x Phoenix USLKG 2-conductor, 4 mm <sup>2</sup> , green-yellow	35 x 90 mm (1x)	690 V	224644 ▲	0.610
	8118/132-542-0	4 x Polyamide cable gland M25 x 1,5 7 – 17 mm 2 x Polyamide stopping plug M25 x 1,5	11 x Phoenix UT 2-conductor, 4 mm <sup>2</sup> , grey 2 x Phoenix USLKG 2-conductor, 4 mm <sup>2</sup> , green-yellow	35 x 120 mm (1x)	690 V	224646	0.890
Product Description		Ex e terminal box					
Gas temperature class		T6					
Ambient temperature °C		-20 ... +40 °C					
Figure	Product Type	Cable glands	Terminal	Terminal rail	Rated operational voltage AC	Art. No.	Weight kg
	8118/122-199-K0125	1 x Polyamide cable gland M25 x 1,5 7 – 17 mm 1 x Polyamide cable gland M25 x 1,5 13 – 18 mm	4 x Phoenix UT 2-conductor, 4 mm <sup>2</sup> , grey 1 x Phoenix UT 2-conductor, 4 mm <sup>2</sup> , green-yellow	–	690 V	220336	0.580
Product Description		Ex i terminal box					
Gas temperature class		T6					
Ambient temperature °C		-40 ... +75 °C					
Figure	Product Type	Cable glands	Terminal	Terminal rail	Rated operational voltage AC	Art. No.	Weight kg
	8118/212-047-0	2 x Polyamide cable gland M20 x 1,5 4 – 13 mm 1 x Polyamide stopping plug (Provided separately) M20 x 1,5	3 x WAGO 264 4-conductor, 2,5 mm <sup>2</sup> , blue 1 x WAGO 264 4-conductor, 2,5 mm <sup>2</sup> , grey	15 x 70 mm (1x)	60 V	224643 ▲	0.360

## Selection Table

Product Description		Ex i terminal box					
Gas temperature class		T6					
Ambient temperature °C		-40 ... +75 °C					
Figure	Product Type	Cable glands	Terminal	Terminal rail	Rated operational voltage AC	Art. No.	Weight kg
	8118/222-504-0	3 x Polyamide cable gland M25 x 1,5 7 – 17 mm 2 x Polyamide stopping plug (Provided separately) M25 x 1,5	9 x Phoenix UT 2-conductor, 4 mm², blue 2 x Phoenix UT 2-conductor, 4 mm², grey	35 x 90 mm (1x)	60 V	224645	0.610

Enclosure equipped with terminals  
Stopping plugs are enclosed separately

Further versions on the Internet [r-stahl.com](http://r-stahl.com) - WebCode 8118B

## Technical Data

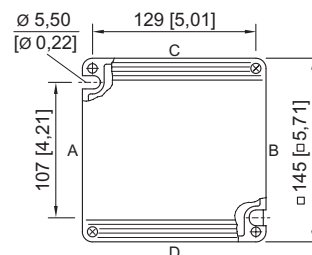
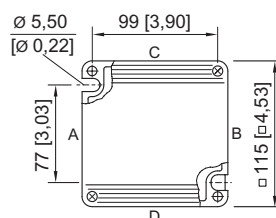
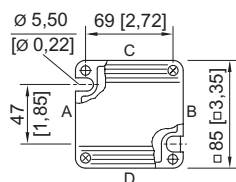
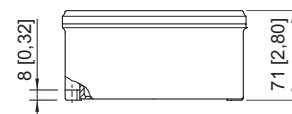
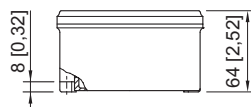
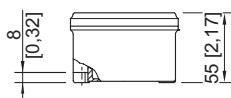
Variant	Terminal box Ex e Phoenix UT	Terminal box Ex e Weidmüller WDU	Terminal box Ex i Phoenix UT
<b>Explosion Protection</b>			
IECEX gas explosion protection	Ex eb IIC T6/T5 Gb	Ex eb IIC T5/T4 Gb	Ex ia ib IIC T6 Gb
ATEX gas explosion protection	Ⓔ II 2 G Ex eb IIC T6/T5 Gb	Ⓔ II 2 G Ex eb IIC T5/T4 Gb	Ⓔ II 2 G Ex ia ib IIC T6 Gb
IECEX dust explosion protection	Ex tb IIIC T80 °C ... T95 °C Db	Ex tb IIIC T95 °C ... T130 °C Db	Ex tb IIIC T80 °C Db
ATEX dust explosion protection	Ⓔ II 2 D Ex tb IIIC T80 °C ... T95 °C Db	Ⓔ II 2 D Ex tb IIIC T95 °C ... T130 °C Db	Ⓔ II 2 D Ex tb IIIC T80 °C Db
Certificates	ATEX (PTB), Brazil (ULB), China (NEPSI), EAC (LPE), IECEX (PTB)	ATEX (PTB), Brazil (ULB), China (NEPSI), EAC (LPE), IECEX (PTB)	ATEX (PTB), Brazil (ULB), China (NEPSI), EAC (LPE), IECEX (PTB)
Ship approval	BVIS	BVIS	BVIS
Notes	CCC certificate available from 2021 onward	CCC certificate available from 2021 onward	CCC certificate available from 2021 onward
Notes	Product label may vary. Series devices have certification according to ATEX and IECEX.		
<b>Mechanical Data</b>			
Enclosure material	Polyester resin, Glass fibre reinforced	Polyester resin, Glass fibre reinforced	Polyester resin, Glass fibre reinforced
Silicone-free	No	No	No

## Technical Drawings – Subject to Alterations

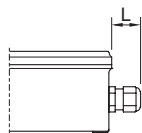


**Accessories**

Figure	Description	Art. No.	Weight kg
<b>Brass plate with thread</b>			
	for cable glands 1 x M20 x 1.5 for earth continuity when using metal glands  can be installed into: enclosure size 1 side C / D enclosure size 2 side C / D enclosure size 3 side C / D	133208	0.030
	for cable glands 2 x M20 x 1.5 / 1 x M25 x 1.5 / 1 x M32 x 1.5 for earth continuity when using metal glands threads are cut acc. to order  can be installed into: enclosure size 2 side C / D enclosure size 3 side C / D	133182	0.060
	for cable glands 2 x M25 x 1.5 for earth continuity when using metal glands  can be installed into: enclosure size 2 side C / D enclosure size 3 side C / D	133198	0.080
	for cable glands 2 x M32 x 1.5 for earth continuity when using metal glands  can be installed into: enclosure size 3 side C / D	133202	0.140

**Dimensional Drawings (All Dimensions in mm [inches]) – Subject to Alterations**

 8118/.1.  
enclosure size 1

 8118/.2.  
enclosure size 2

 8118/.3.  
enclosure size 3

**Length L**

protrusion length for cable glands, Series 8161

in case of M20: 25 ... 31 [0.98 ... 1.22]

in case of M25: 27 ... 33 [1.06 ... 1.3]

in case of M32: 32 ... 39 [1.26 ... 1.54]

protrusion length for cable glands with strain relief,

Series HSK-K-MZ

in case of M25: 41 [1.61]